

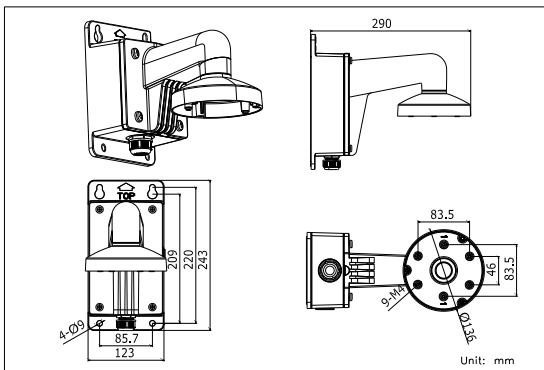
## DS-1273ZJ-135B

Wall Mounting Bracket for  
Dome Camera (with Junction Box)

### Features:

- Aluminum alloy material with surface spray treatment
- Design of cable entrance hole
- Better water proof design
- Junction box with waterproof stopper

### Dimension:



### Order Model:

DS-1273ZJ-135B

### Parameter:

|                      |   |
|----------------------|---|
| Model                | DS-1273ZJ-135B  |
| Parameters           | Wall Mounting Bracket for Dome Camera (with Junction Box) |
| Appearance           | Hik White   |
| Range of Application | Suitable for dome camera wall mounting                    |
| Material             | Aluminum Alloy  |
| Dimension            | 136×243×290mm   |
| Weight               | 1490g   |

### Notice:

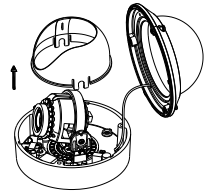
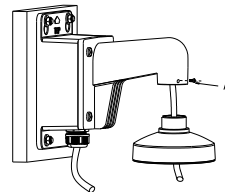
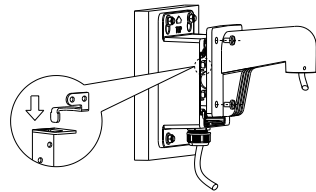
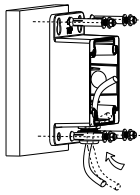
- The bracket should be installed on flat wall
- The wall must be capable of supporting over 3 times as much as the total weight of the camera and the mount.
- The maximum load capacity of the bracket is 4.5KG

### Model Suitable:

DS-2CD2712F-I(S), DS-2CD2732F-I(S), DS-2CC52X1P(N)-VP,  
DS-2CC52X1P(N)-AVPIR2

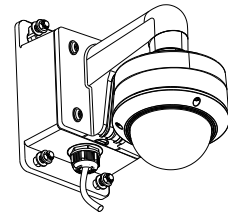
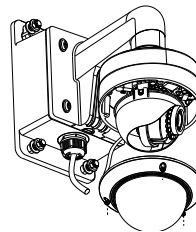
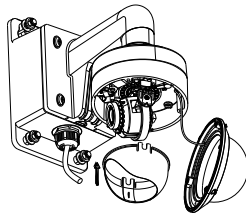
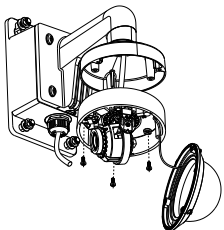
### Installation Step:

- ① Choose appropriate wall to install the bracket and thread the cable through waterproof stopper
- ② Fix bracket to junction box thread the cable and screw up
- ③ Fix adaptor cap to bracket with tightening screw
- ④ Take off lower dome and lining



A: Fastening screw

- ⑤ Install dome camera to adaptor cap and fix with screw
- ⑥ Install lining to dome camera and adjust the angle of view
- ⑦ Install lower dome to dome camera and screw up
- ⑧ Installation complete



**Note:** The actual bracket may vary from the picture above.